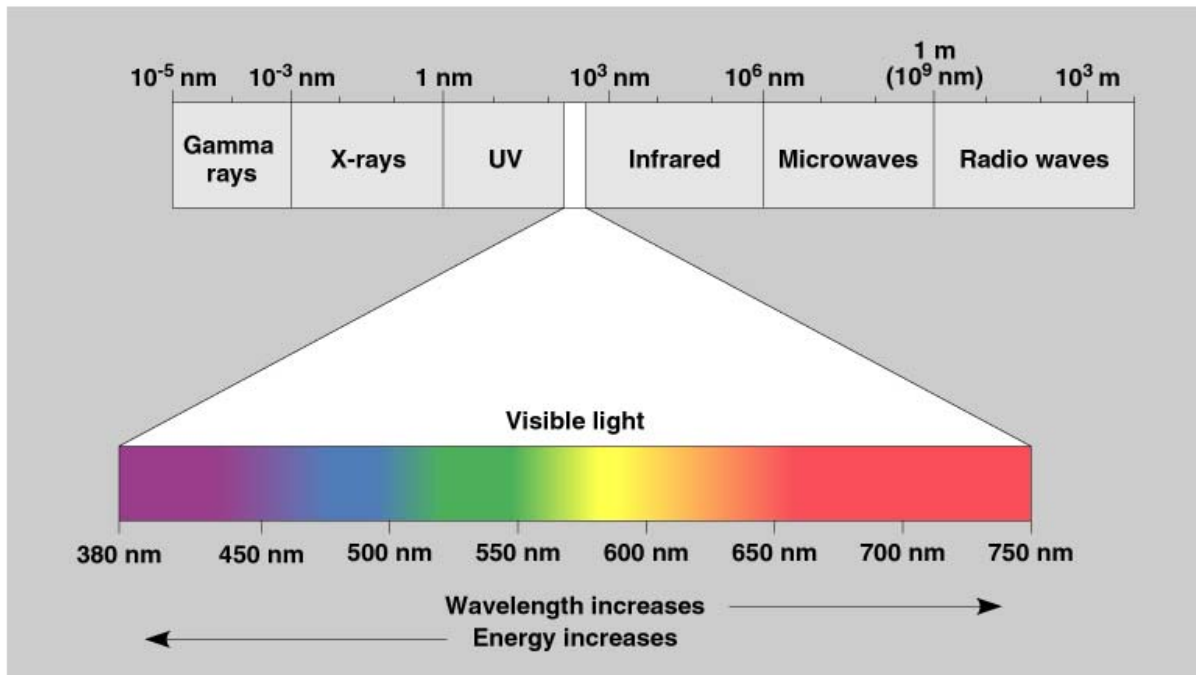


# IN WHAT PART OF THE ELECTROMAGNETIC SPECTRUM DO WE SEE?

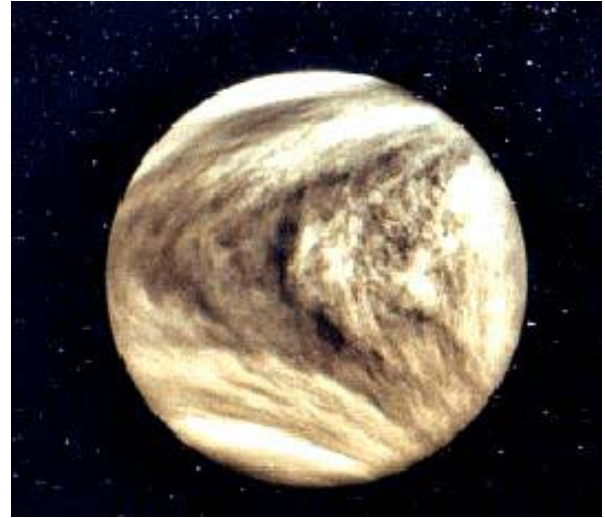


Our lone octave doesn't cover much. But we can devise instruments and techniques for looking in other wavelength regions.

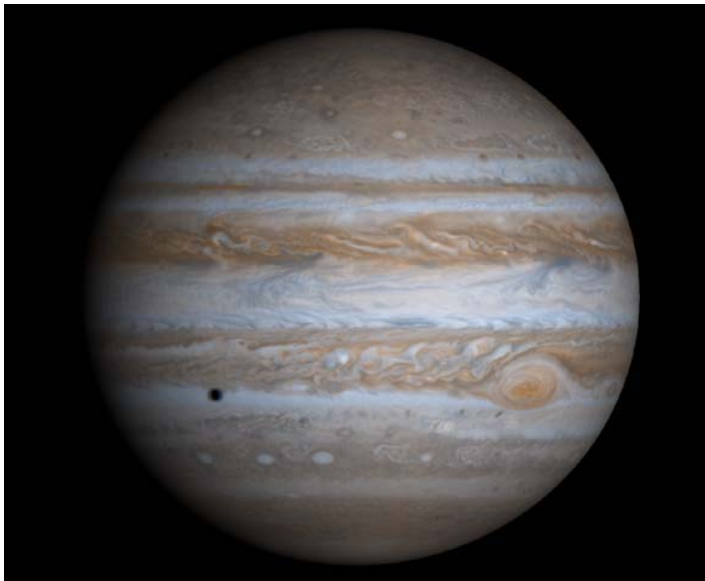
A grayscale represents some other quantity, and any color seen is “false color” where colors are used to distinguish features. In the infrared region, we are generally looking at a representation of temperature.



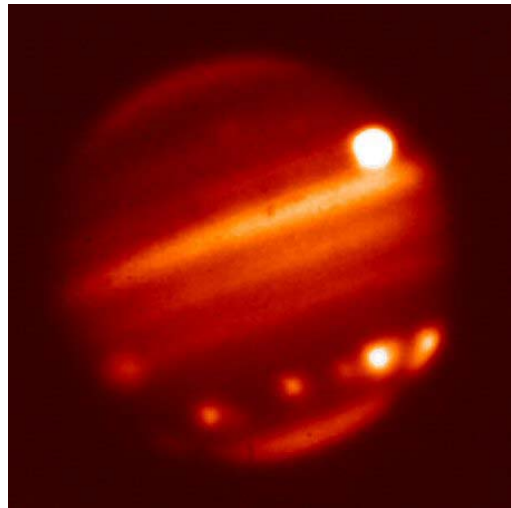
# PLANETS REVEAL SOME STRANGE STUFF



**VENUS (UV)**

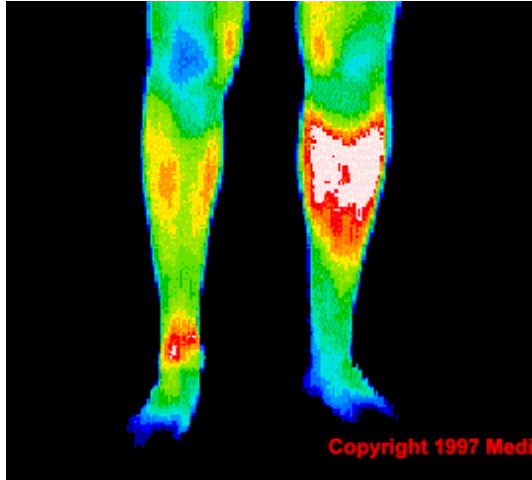


**JUPITER (VISIBLE)**

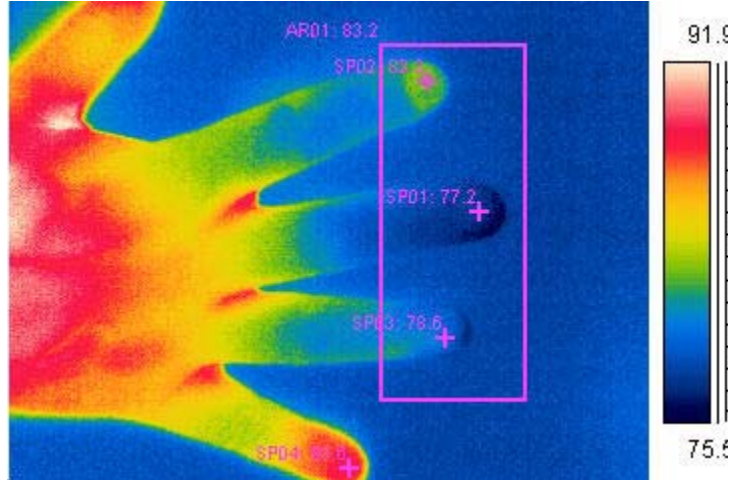


**JUPITER (IR)  
SHOEMAKER-LEVY**

# INFRARED IS USEFUL MEDICALLY



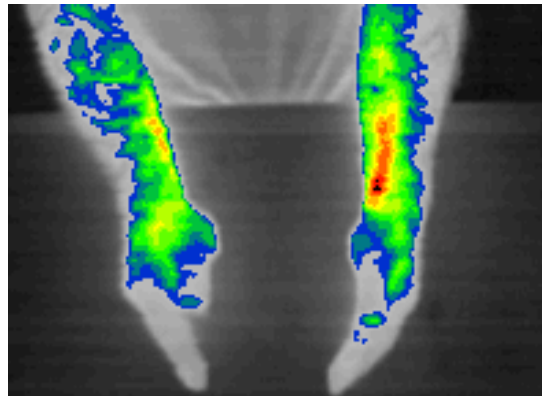
**BAD LEGS**



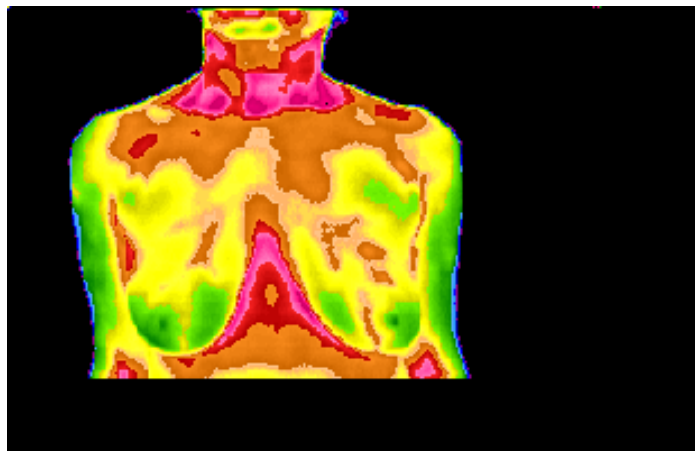
**REYNAUDS**



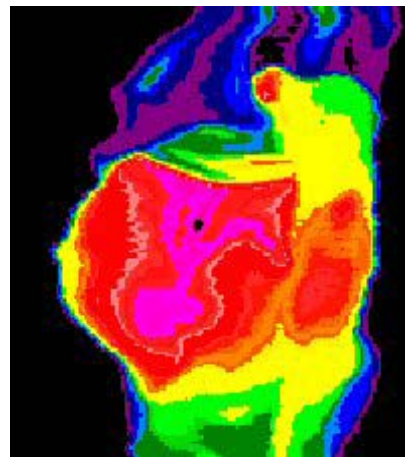
**BAD BRAIN**



**TUNNEL CARPAL**



**BREAST CANCER**



**VERY PREGNANT**

# INFRARED IS USEFUL IN MANY WAYS

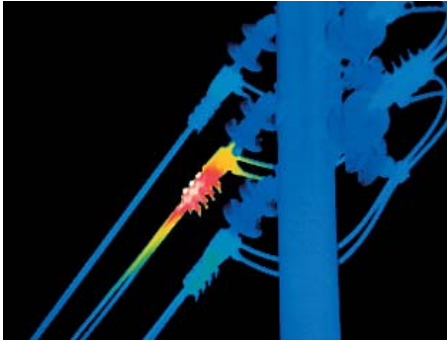


**CADILLAC NIGHT VISION SYSTEM**

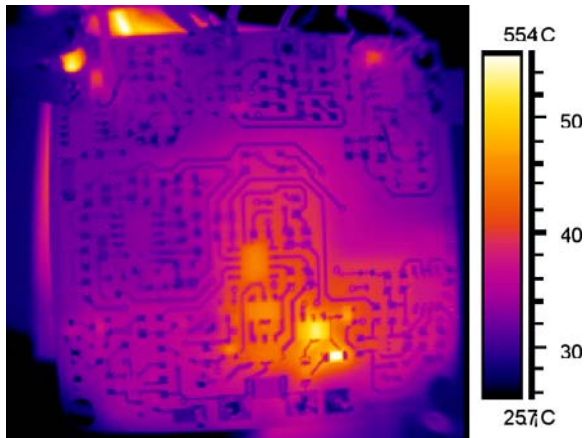


**YOU CAN RUN BUT YOU CAN'T HIDE!**

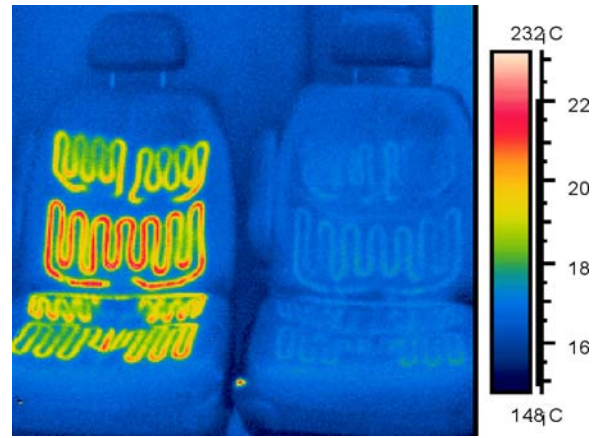




**THERMAL ANOMALY AT BOLTED CONNECTION**



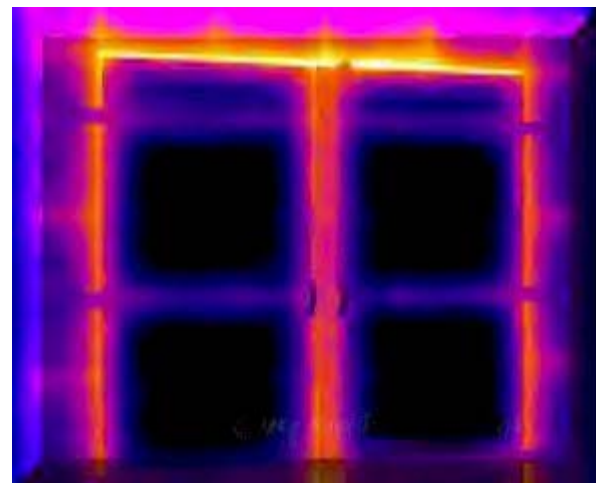
**HOT CHIP ON PC BOARD**



**HEATED SEATS**



**ENERGY LOSS**



**ENERGY LOSS**

# INFRARED IS ALSO FUN



**VISIBLE**



**NEAR-INFRARED**



**THERMAL INFRARED**

