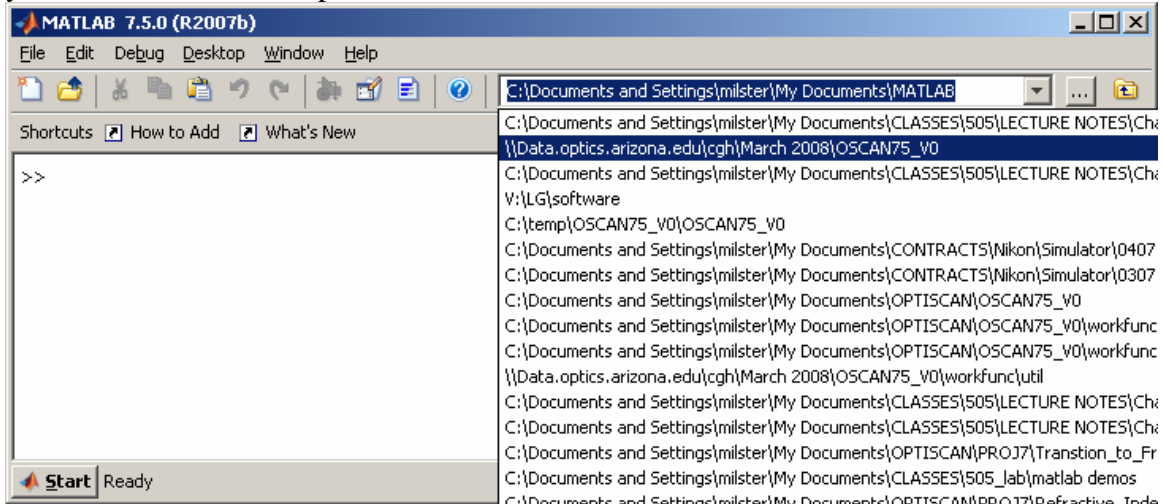


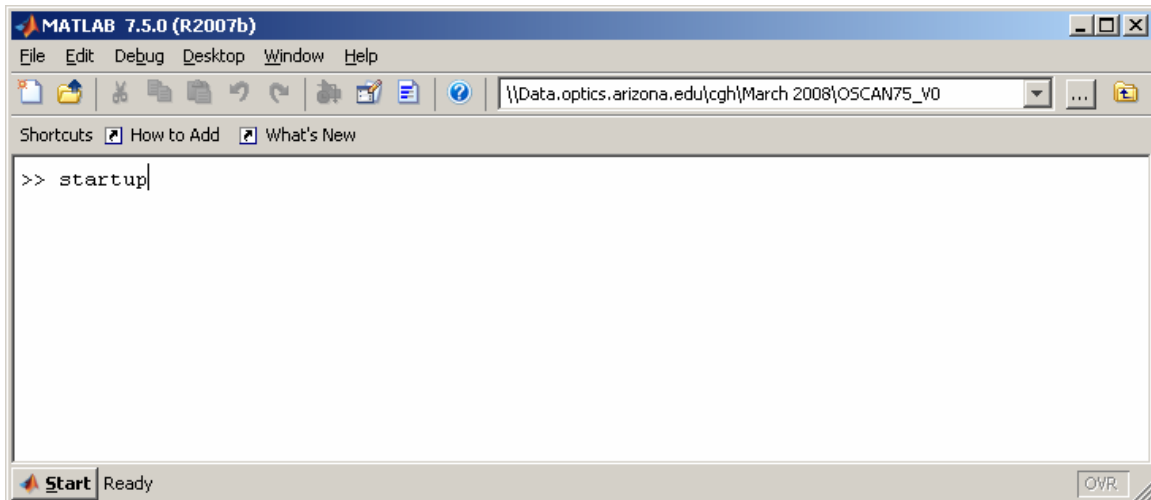
04/24/08

How to load and start OptiScan

- 1.) Start Matlab. You must have either Matlab 7.4 or 7.5 to run OSCAN75_V0.
- 2.) Through the browser in the Matlab command window, go to the directory into which you have downloaded OptiScan.



- 3.) Type 'startup' at the Matlab prompt.



- 4.) You should see this window appear in a few seconds.

