

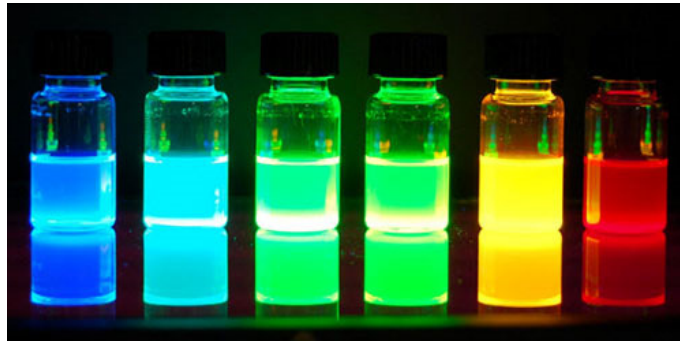
Biophotonics (Spring 2019)

BME/OPTI 420/520

MWF 2-2:50 pm

Instructor: Prof. Judith Su

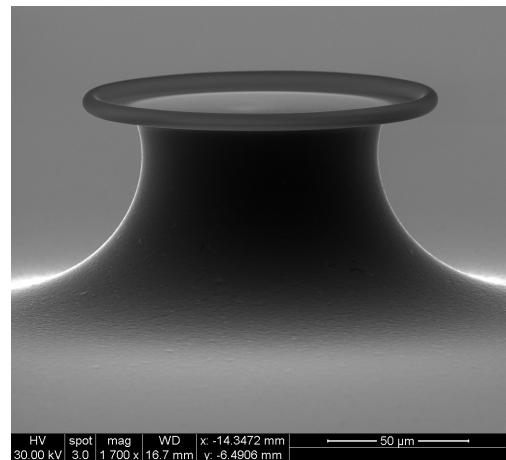
Mines & Metallurgy Rm. 221



<https://www.sigmaaldrich.com/technical-documents/articles/materials-science/nanomaterials/quantum-dots.html>



<https://phys.org/news/2013-09-butterfly-wings-technologies-fabrics-cosmetics.html>



HV 30.00 kV spot 3.0 mag 1 700 x WD 16.7 mm x -14.3472 mm y -6.4806 mm

Course Description: This course will cover the interaction of light with biological material. A particular focus will be the use of photonics in medical diagnostics. The course will include introductory biological concepts such as DNA, proteins, cells, and tissues. In addition, the course will teach the principles and applications of bioimaging, spectroscopy, and biosensors, as well as summarize recently published progress in the field.